

## Research ethics submissions – determining level of review

Go to [http://www.cabrini.com.au/cabriniinstitute/humanresearchethics\\_formdownloads.asp](http://www.cabrini.com.au/cabriniinstitute/humanresearchethics_formdownloads.asp)  
Read Handbook and risk review policy (Appendix A) including exclusions

Fill in Attachment 3: QA Checklist

If you answered **NO** to all QA questions

You require Review Level 1

Fill in Attachment 2: Cabrini supplement form

Submit application form and all paperwork as listed in item 16 of Appendix A to CHREC Manager, who is delegated to approve the study on behalf of the CHREC

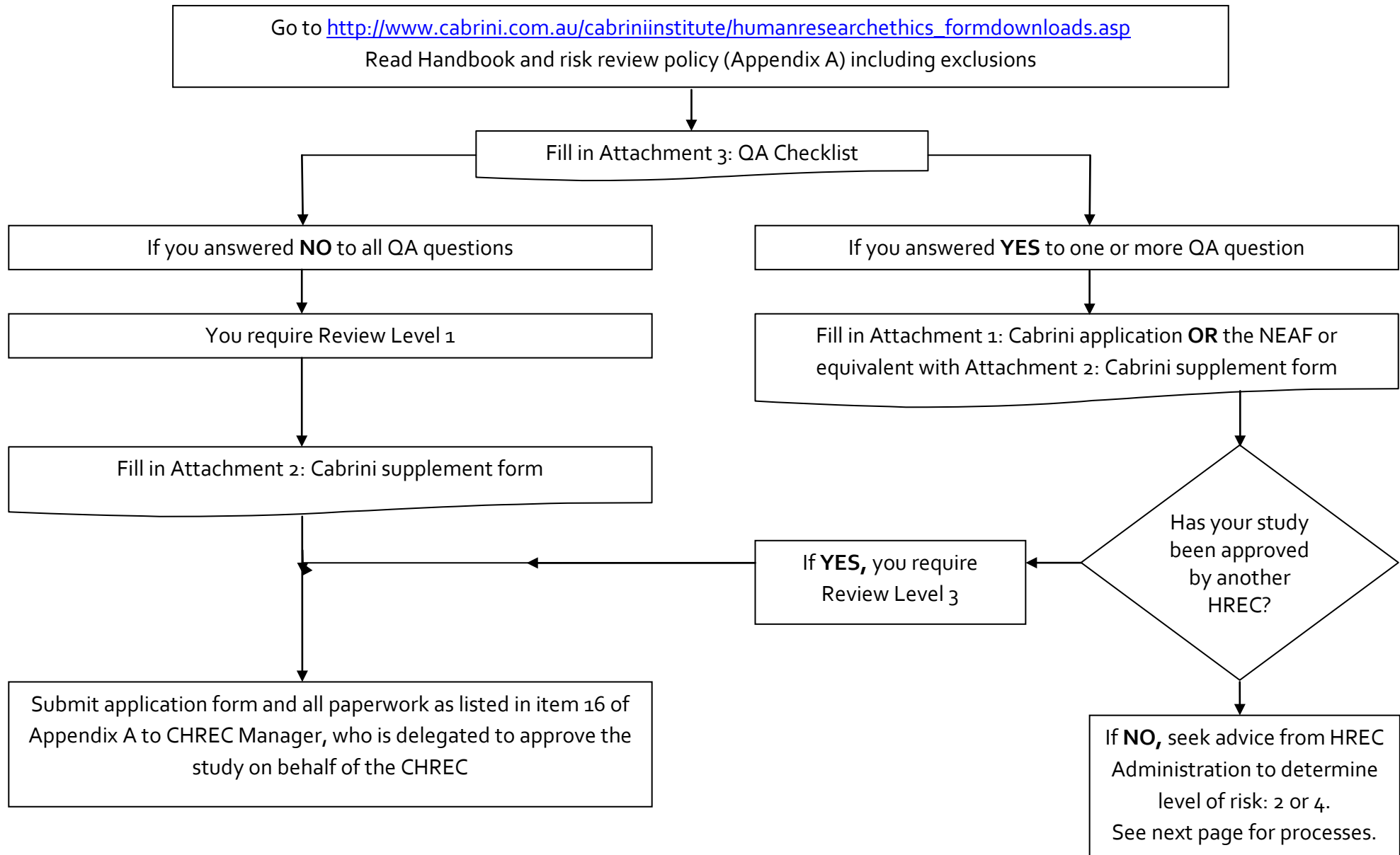
If you answered **YES** to one or more QA question

Fill in Attachment 1: Cabrini application **OR** the NEAF or equivalent with Attachment 2: Cabrini supplement form

Has your study been approved by another HREC?

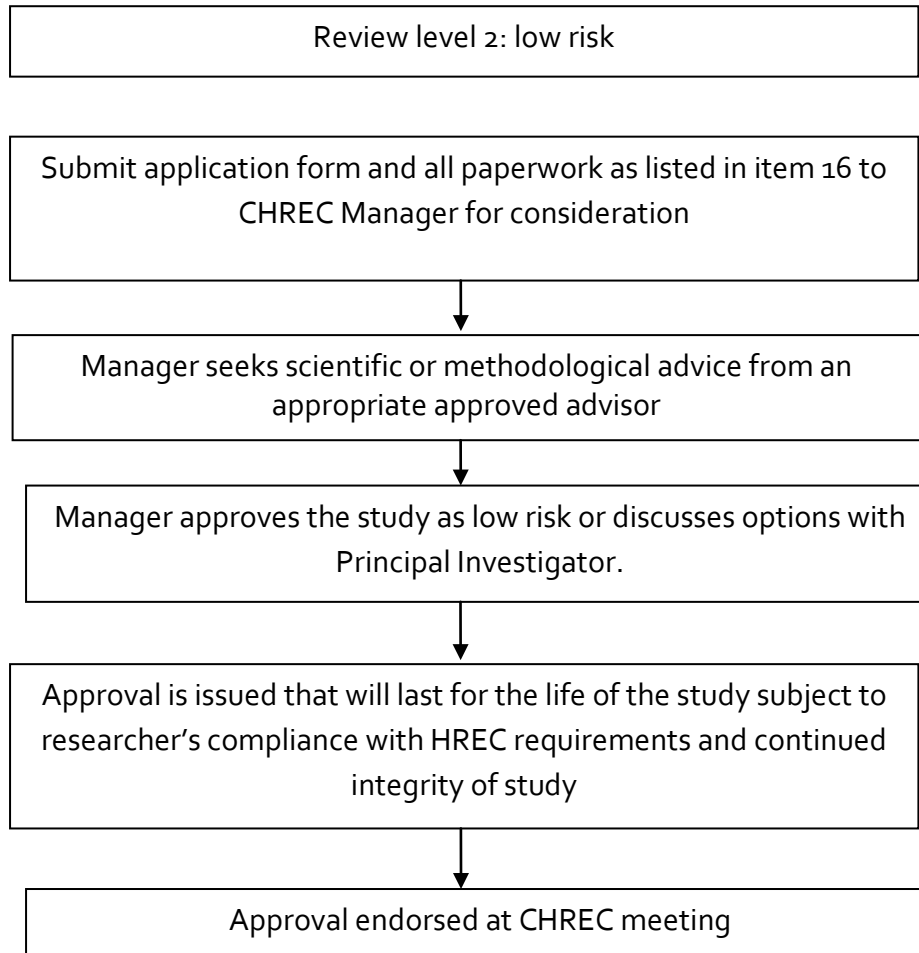
If **YES**, you require Review Level 3

If **NO**, seek advice from HREC Administration to determine level of risk: 2 or 4. See next page for processes.



## Research ethics submissions – review processes

### Review level 2: low risk



### Review level 4: high risk

