



CABRINI HEALTH MALVERN REDEVELOPMENT COMMUNITY FORUM

17 AUGUST 2023

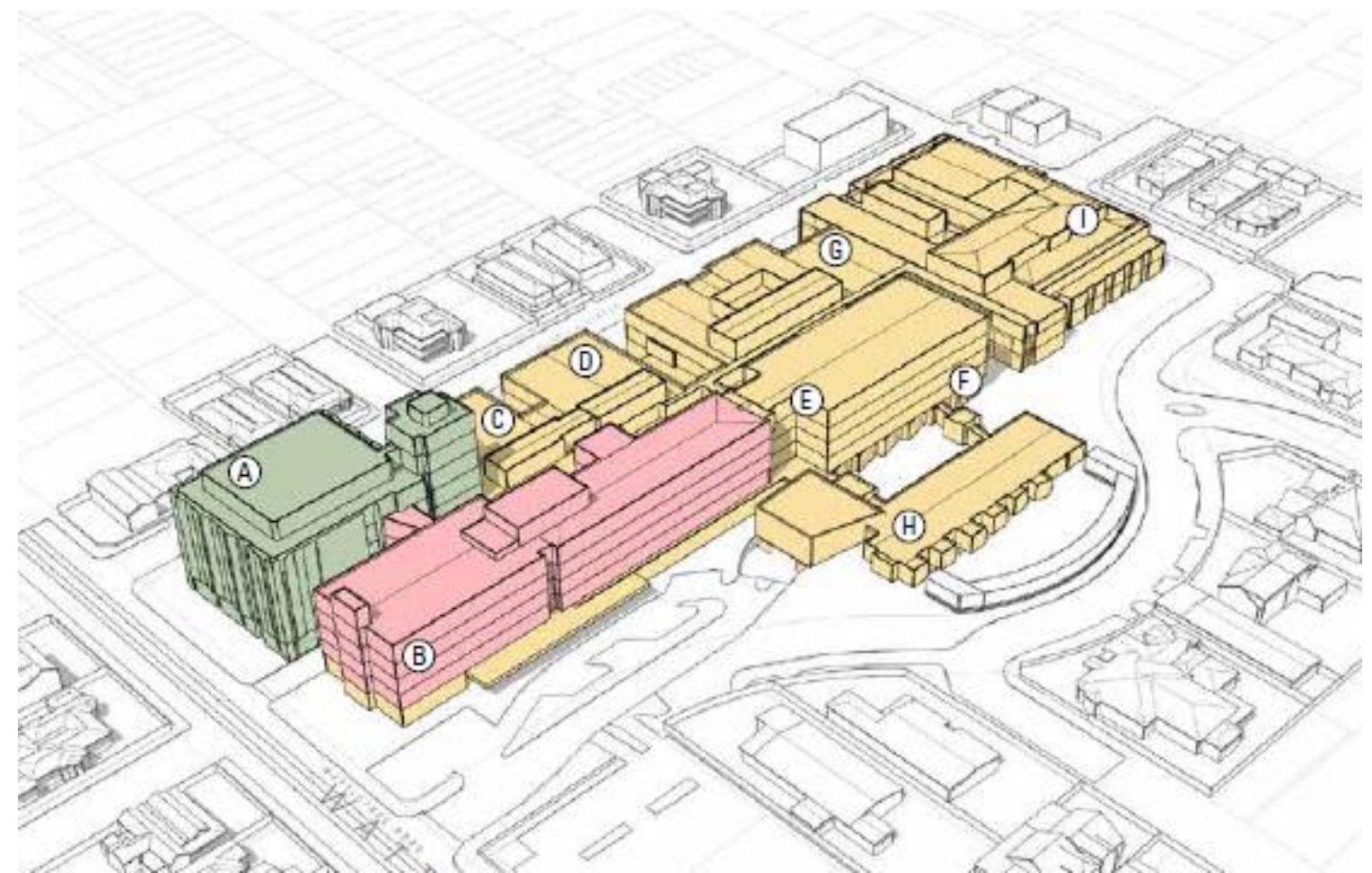
SESSION FORMAT AND ETIQUETTE

- This presentation will run for 45 minutes which will include a chance to ask questions of our panellists.
- If you would like to ask a question, please type your question in the Q&A section as illustrated.
- This session is being recorded.



OVERVIEW

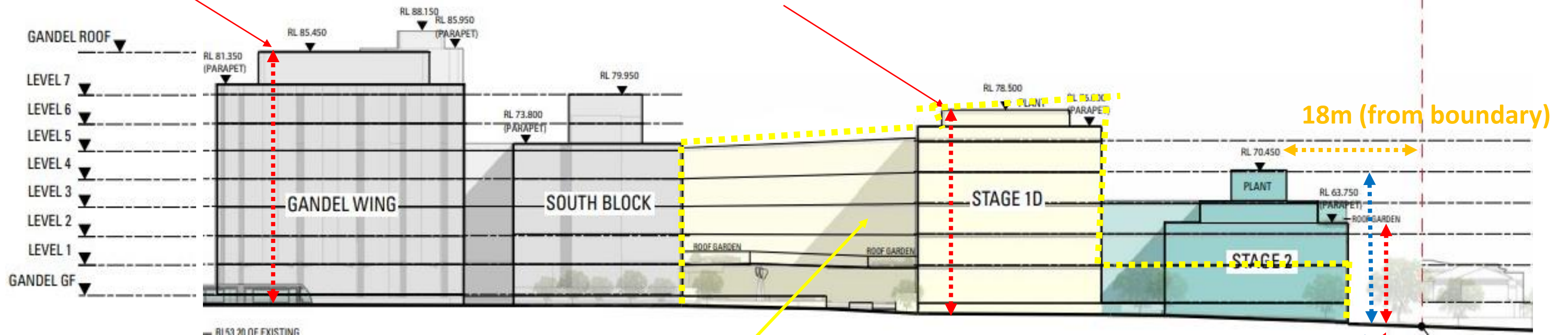
- Our need to redevelop.
- Works completed to date.
 - Two new operating theatres - completed in May 2023.
- Current phase – where things stand.
 - Planning in progress for next stage of theatre redevelopment and Emergency Department refurbishment.
 - Masterplan submission lodged with Department of Transport and Planning
 - Project referred to standing Advisory committee for assessment.



BUILDING LEVELS AND HEIGHTS

32.25m (approx. height)

26.5m (approx. height)

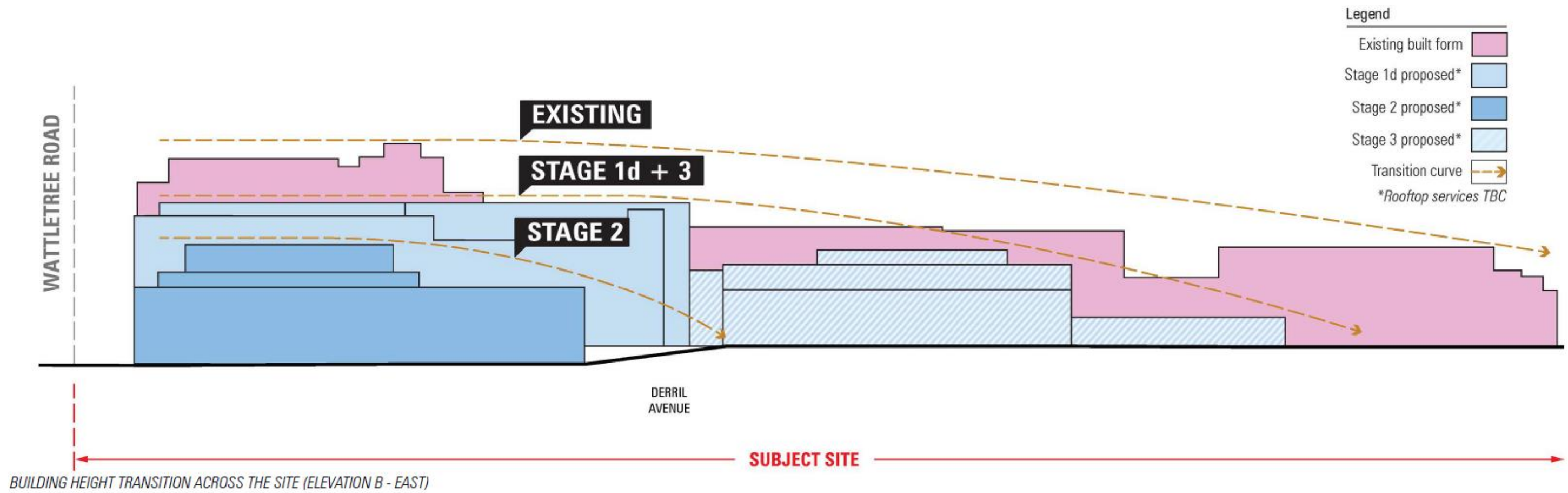


Initial new build phase of Master Plan

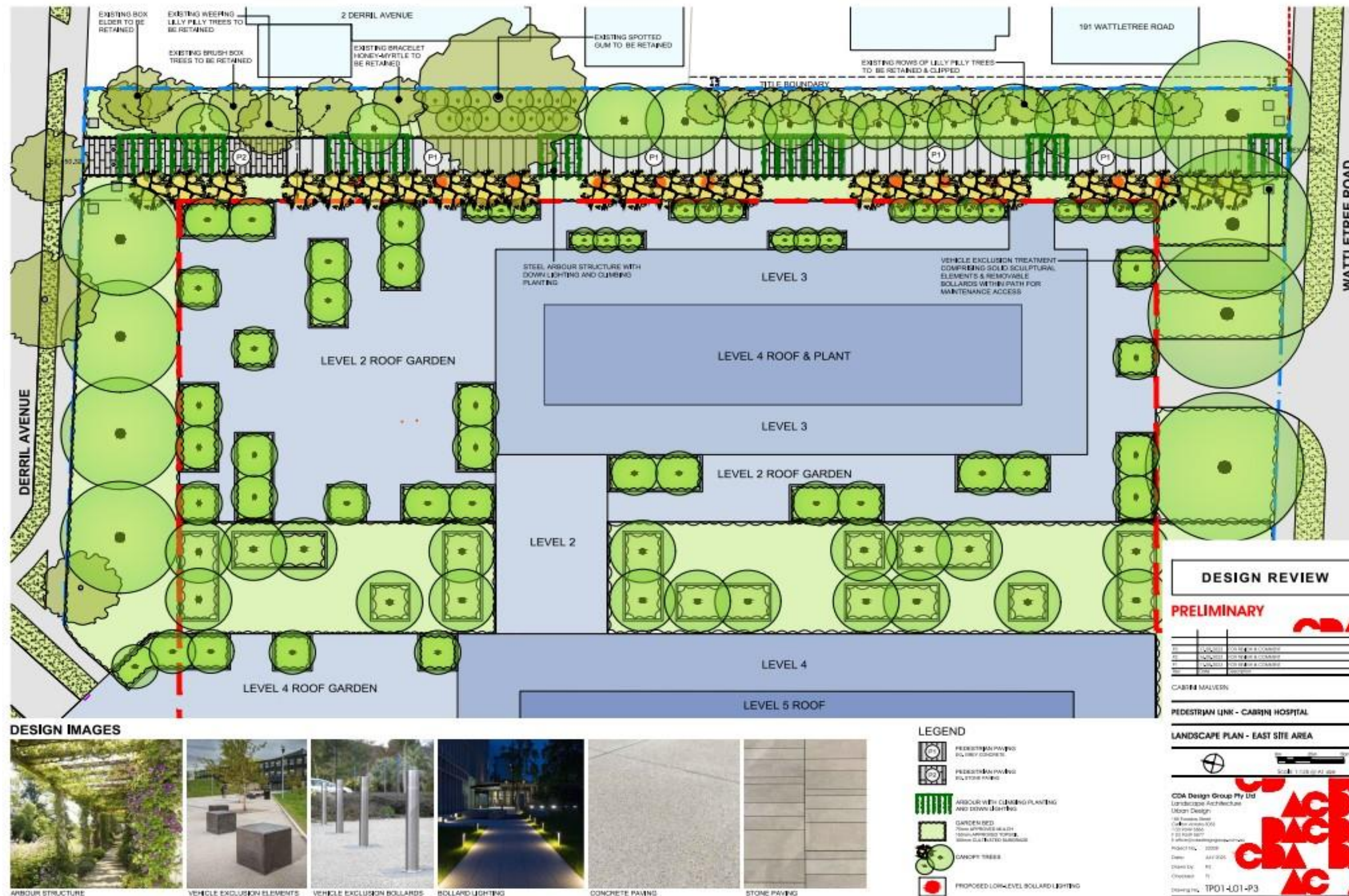
19.95m (approx. height)

13.15m (approx. height)

BUILDING LEVELS AND HEIGHTS



DESIGN OVERVIEW



*DISPLAY PURPOSES ONLY

DESIGN OVERVIEW



*DISPLAY PURPOSES ONLY

DESIGN OVERVIEW



*DISPLAY PURPOSES ONLY

WORKING WITH THE COMMUNITY

- Cabrini will continue to work with the community and council to finalise the design of the Derril Ave – Wattletree Road Access Route and greenspace.
- We've had a number of residents express interest in joining our working group. We'll be in contact with those people within the fortnight to share further details.