

Medical Imaging Patient Information

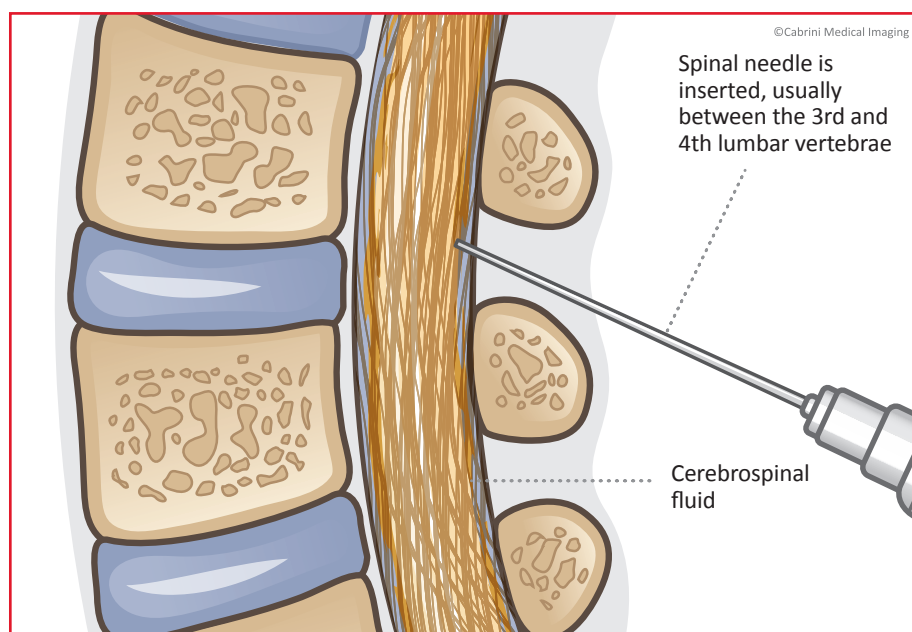
Interventional Radiology Lumbar Puncture +/- Intrathecal Injection

Lumbar Puncture refers to the procedure where a sample of cerebrospinal fluid (CSF) is obtained, so that it can be sent to pathology for testing.

It can also be used to measure the pressure of the cerebrospinal fluid, and can also be done to remove excess spinal fluid.

For patients requiring an intrathecal injection as per your doctor's request, medication will be injected into the intrathecal space while the lumbar puncture needle is in place.

It is important you read the following information so that you will be able to consent to have this procedure done. If you have any further questions you will be given an opportunity to ask nursing or medical staff on the day.



Before you come in for the procedure

You will have been contacted by the Medical Imaging Department with a date and time for your procedure. You will have been asked to go to the admissions department one hour prior to your appointment time, as you will be admitted to the hospital as a 'day case'.

This does not mean you will be in the hospital for the whole day, though it is best to allow at least 5 hours.

You will have been given instructions by the Medical Imaging Department.

Please take note of the following, and contact the department on 9508 1444 if you have any concerns with the following.

- Please tell the staff if you are or think you may be pregnant.
- If you are on any blood thinning medication, please make sure you let staff know as soon as possible, as this could affect the ability to do your procedure. Please check with your GP if unsure of your medication.
- On the day of your procedure please bring a list of your current medications (this includes over the counter medications, and herbal remedies).
- On the day of your procedure it is important that you bring any relevant X-rays.
- Please make sure you have someone to drive you home (you are not permitted to drive until the following day).

How your Lumbar Puncture will proceed, +/- intrathecal injection

Following the admission department, you will be brought to the Medical Imaging Department where you will be prepared for your procedure, and taken to the appropriate room that it will take place.

At this point you have an opportunity to ask one of the nursing staff further questions or to speak to the doctor performing the injection. Otherwise you will be positioned on the table where the procedure is to take place. You will normally be asked to lie on your side.

After washing your skin with antiseptic, a small amount of local anaesthetic will be injected under the skin in the relevant area; this may sting for a moment. The doctor will then place the needle into the correct position, using an X-ray machine as guidance.

Where a Lumbar Puncture is requested, once the needle is in the correct position, the doctor will collect the sample of spinal fluid, and occasionally you may also need to have a blood sample taken from your arm at this time.

Where an Intrathecal Injection is requested, when the needle is in position the medication will be injected into the intrathecal space, this may or may not be after having some of the spinal fluid collected.

You will then be taken to the recovery area, where you will need to rest, lying flat while being monitored for up to 4 hours.

As with all medical procedures there are associated risks/complications with having this procedure done, they can be broken down into common, rare and very rare.

Common risks/complications

- Discomfort to the area, following the injection. This maybe due to the tissues being aggravated by the procedure.
- Headache, requiring analgesia and bed rest.
- Bleeding or bruising to the localised area.

Rare risks/complications

- More severe headache, requiring bed rest for a number of days, or may require further medical treatment.
- Infection, which may require antibiotic treatment.
- The procedure may have to be abandoned due to technical or medical reasons.
- Allergy to medications used during this procedure.

Very rare risks/complications

- Damage to the spinal cord requiring surgery and other treatment.
- Permanent nerve damage, leading to paralysis.

How do I get my results?

Digital images are immediately available to your doctor and your records will be kept permanently. This occurs through a system called PACS. If a priority report is requested it will be issued within two hours and faxed or emailed to your doctor, however this can sometimes take up to 24 hours. If your referring doctor wants to see you on the day of your examination, please advise the reception staff when you arrive for your appointment, so the appropriate information can be made available for you to take to your doctor.

Please note:

It is important to bring with you your referral, previous X-rays and any other tests (only if previous ones were **not** done at Cabrini or MIA).

For an appointment, or if you have any questions about the test, please call **9508 1444**.