

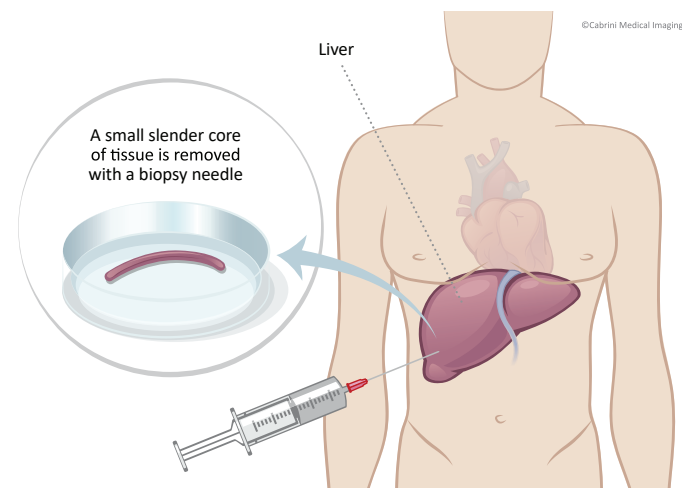
Liver biopsy

What is a liver biopsy?

Your doctor has asked that you have a liver biopsy performed with us. This is because your doctor wants a small sample of tissue taken so it can be looked at by a pathology doctor.

Liver biopsies are done under imaging guidance so that the small sample is collected from the correct area. Most commonly an ultrasound machine is used for this purpose.

It is important you read the following information so that you will be able to consent to this procedure. If you have any further questions you will be given an opportunity to ask nursing or medical staff on the day.



Before you come in for the procedure

You will be contacted by the Cabrini Medical Imaging with a date and time for your procedure and you will be asked to go to the admissions department one hour prior to your appointment time, as you will be admitted to the hospital as a 'day case'. This does not mean you will be in the hospital for the whole day.

You will be given instructions by Cabrini Medical Imaging. Please take note of the following and contact the department on the number below if you have any concerns.

- If you are on any blood thinning medication, please make sure you let staff know as soon as possible, as this could affect the ability to do your procedure. Please check with your GP if unsure of your medication.

- On the day of your procedure please bring a list of your current medications (this includes over-the-counter medications, and herbal remedies)
- Please make sure you have someone to drive you home, as you are not permitted to drive until the following day)

How your liver biopsy will proceed

From the admissions department, you will be taken to the medical imaging department where you will be prepared for your procedure, and taken to the appropriate room.

At this point you have an opportunity to ask one of the nursing staff further questions or to speak to the doctor performing the biopsy. You will then be positioned on the table where the procedure is to be done. You may also have a small needle placed in your arm at this point and have your blood pressure and pulse recorded.

Once you have been placed in the appropriate position, it is very important that you remain still unless otherwise instructed.

During the procedure you will be asked to hold your breath. It is important that you follow these breathing instructions

After washing your skin with antiseptic, a small amount of local anaesthetic will be injected under the skin in the relevant area. This may sting for a moment. The rest of the procedure will follow with the doctor using the ultrasound machine to guide the needle into the correct position.

Once the needle is in the correct position a small sample will be taken. It is not unusual for multiple samples to be taken. This is sometimes checked with a pathology doctor, who will confirm that the sample is adequate for testing. They cannot give a result at this time. If the sample is not adequate, another sample may be taken.

At this point the procedure is finished, but it is important to remain in the same position until otherwise notified.

You will be then taken to a recovery area, where you will be observed for at least two hours. Some doctors may ask that we keep you longer, usually about four hours.

As with all medical procedures there are associated risks and complications with having this procedure done, they can be broken down into common, rare and very rare.

Common risks and complications

- Discomfort to the area, following the injection. This may be due to the tissues being aggravated by the procedure.
- It is possible that some patients may experience some discomfort in their shoulder, this is referred pain, and should resolve in a short time
- Bleeding or bruising to the localised area

Rare risks and complications

- Infection, which could require additional treatment, possibly antibiotics
- Bleeding in the liver causing you to experience some pain, requiring medical treatment
- Allergy to medications used during this procedure
- Enough tissue may not be collected for a diagnosis, requiring further investigations

Very rare risks and complications

- More substantial bleeding in the liver, requiring medical intervention, and a longer hospital stay

How do I get my results?

Digital images are immediately available to your doctor and your records will be kept permanently. This occurs through a system called PACS. **If a priority report is requested it will be issued within two hours and faxed or emailed to your doctor, however this can sometimes take up to 24 hours.**

If your referring doctor wants to see you on the day of your examination, please advise the reception staff when you arrive for your appointment, so the appropriate information can be made available for you to take to your doctor.

Important

It is important to let us know when you make your booking if you are or think you may be pregnant or are breastfeeding.

It is important to bring with you your referral, previous x-rays and any other tests (only if previous ones were **not** done at Cabrini or I-MED).

Questions

For more information or to make an appointment, please contact Cabrini Medical Imaging using the number below.